



Meetings & Events



CONTENT

- 4 INTRODUCTION
- 5 BOARDROOMS
- 6 BOOKMARK 1
- 7 BOOKMARK 2
- 8 CONFERENCE PACKAGES & ADD-ONS
- 9 SMALL & PRIVATE
DUPLEX SUITE
- 10 EVENTS
MACHINE HALL
- 11 EXTRAS
- 11 FLYING APÉROS
- 12 DINNER IN OUR LIBRARY
- 13 TECHNIC
- 14 SIDE PROGRAM
- 15 ROOMS
- 16 ARRIVAL



Hotel

THERMALBAD

Hürlimann Areal

INTRODUCTION



The B2 Hotel is where zeitgeist and history meet. The modern city hotel in the former Hürlimann Brewery impresses with a unique style, unmistakable architecture and an innovative concept that brings people together.

In the middle of Zurich.

Rooms	Boardrooms	Specials
60	2	Event location Machine Hall Library with 33'000 Books

All prices are in Swiss Francs and including of legal VAT.

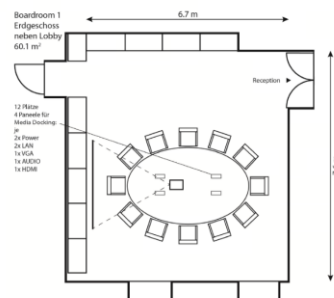
BOARDROOMS



Some things are just better discussed in person. In real life or digitally. We're equipped for both. Our two boardrooms are kitted out with modern presentation technology as well as state-of-the-art video conferencing equipment. We have the interior design to match your needs. Warm, bright and cosy.



BOARDROOMS BOOKMARK 1

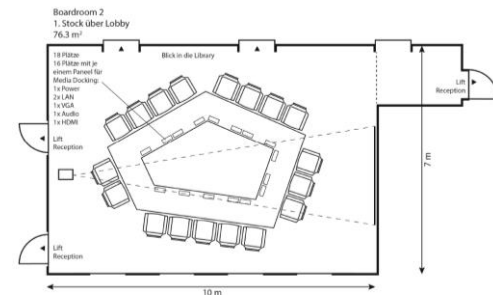


Perfect for ...	brainstorming sessions & ground-breaking workshops
Max. capacity	14*
Size	60 m²
Architecture	High ceilings, large windows, light wood panelling, a spacious round table, Eames office chairs.
Equipment	Projector/ projector screen/ 1 flip chart/ 1 pin board WLAN, Clickshare oder HDMI Nespresso machine for coffee und tea in the room throughout
Room rental	Full day CHF 800.- half day CHF 500.-

* The conference packages can be booked for groups of 8 people and more.

BOARDROOMS

BOOKMARK 2



Perfect for ...	heated discussions, impactful presentations and anyone who ventures to look straight up
Max. capacity	20*
Size	76 m ²
Architecture	Grey concrete, red velvet curtains. Sculptural light fittings, avant-garde reflections from the pool above.
Equipment	Projector/ projector screen/ 1 flip chart/ 1 pin board WLAN, Clickshare oder HDMI Nespresso machine for coffee und tea in the room throughout
Room rental	Full day CHF 1000.- half day CHF 650.-

* The conference packages can be booked for groups of 8 people and more.

BOARDSROOMS

CONFERENCE PACKAGES & ADD-ONS

BASIC PACKAGE (incl. in each package)

Room rental & WLAN
 Projector/ projector screen/ 1 flip chart/ 1 pin board
 Nespresso machine for coffee und tea in the room throughout
 Mineral water with / without CO₂

ADD-ONS (prices per person)

Minibar with a choice of soft drinks	CHF 5.00
Welcome coffee & croissant	CHF 7.50
B2 brainfood	CHF 5.00

HALF DAY* without lunch

(until 12pm or from 1pm)

1 coffee break
 (morning or afternoon)

CHF 85.00 per person

HALF DAY* with lunch

(until 12pm or from 1pm)

1 coffee break
 (morning or afternoon)
 3-course menu
 incl. water, coffee or tea

CHF 125.00 per person

FULL DAY*

(until 6pm)

2 coffee breaks
 (morning and afternoon)
 3-course menu
 incl. water, coffee or tea

CHF 145.00 per person

* The conference packages can be booked for groups of 8 people and more.

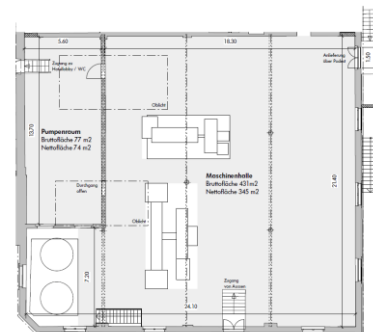


SMALL & PRIVATE DUPLEX SUITE

Perfect for ...	Cosy and confidential meetings
Max. capacity	4
Size	55 m ²
Architecture	Suite on two floors, light wood panelling
Equipment	WLAN Nespresso machine for coffee und tea in the room throughout
Room rental	Full day CHF 550.-



EVENTS MACHINE HALL



Perfect for ...	exhibitions, readings, aperitifs, product presentations, film and photo shoots
Size	170 m ² (theatre) 370 m ² (reception)
Architecture	Daylight through high windows and skylights separate entrance for guests direct delivery possible (door 1.40 m clear width)
Equipment	WLAN a max. of 8 high tables
Room rental*	Full day CHF 3000.- half day CHF 1500.- per hour CHF 250.-

* Spendings on food and drinks will reduce the room rent.

EXTRAS

FLYING APÉROS

APÉRO* SUDHAUS

marinated olives
mixed platter with cheeses and
cold cuts
Babu's bread

CHF 32.00 per person

APÉRO* KÜHLSCHIFF

Carrot ginger soup
Beef Tagliata
with mashed potatoes
Caramel cream

CHF 45.00 per person

APÉRO* HÜRLIMANN

Carrot ginger soup
Beet root carpaccio
with apple and horse radish
River trout filet
with lentil curry
Beef Tagliata
with mashed potatoes
Caramel cream

CHF 65.00 per person

* in the Machine Hall, 20-120 people



EXTRAS

DINNER IN OUR LIBRARY

The tall windows hint at the industrial history of the room. Nowadays, the space is used for eating, drinking, talking, laughing, and reading – simply living. We source our products within a 250km radius. We're convinced of the quality.

For groups of up to 20 people we are happy to put together a 3-course dinner from our evening menu at CHF 79.00 per person.

Drinks are charged separately.

We will gladly send you our wine list.

EXTRAS

TECHNIC

STANDARD EQUIPMENT

Conference phone	CHF 150.00
Additional flip chart / pin board	CHF 25.00

HYBRID TECHNIC MEETING OWL

Bookmark 1 or 2
360° camera
360° microphone & speaker



CHF 250.00

HYBRID TECHNIC LOGITECH RALLY

Bookmark 2
Highdefinition camera including
microphones & speakers



CHF 550.00

SIDE PROGRAM IDEAS

GUIDED BREWMASTER TOUR IN THE B2

During an entertaining tour you will learn about the history of the former Hürlimann brewery.

Duration: ca. 45 minutes

Reservation: upon request and at least 7 days in advance

Price: CHF 290.00

(incl. a sip of Hürlimann beer and a beer speciality from Bertha Hürlimann-Hirzel)

ESCAPE ROOM



Simultaneous play: Ideal for large groups, 6-24 players divided into 2-4 teams.

Maximum number of participants per room: 6 Simultaneous

Reservation of 2-4 tracks required - teams play simultaneously on 2-4 tracks.

LINDT SPRÜNGLI CHOCOLATE COURSE



Exciting things from the world of chocolate manufacturing.

LASERTAG



Laser arena

Group discounts from 20 people on, only 5 minutes walk from the hotel

SECRET MISSION



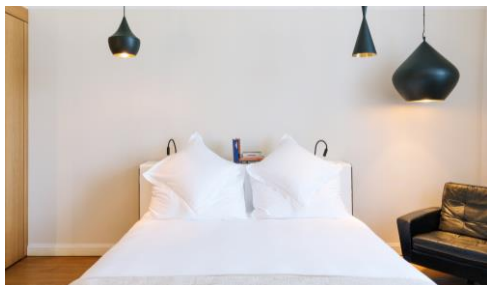
On the hunt for clues through Zurich

Duration: 1.5-2.5 hours

Capacity: 5 to 300

ROOMS

Where the hard work used to happen, now you'll sleep like a log. Available with loggia, classic interior design always included.

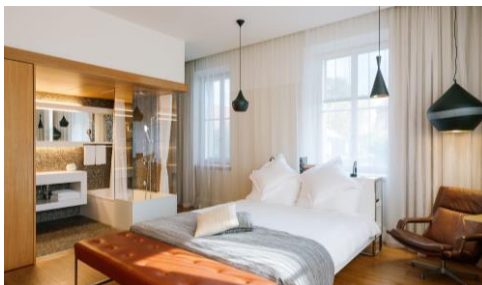


BOUTIQUE DOUBLE ROOM

24–28 m²

King / queen size bed

Bath with rain shower



DELUXE DOUBLE ROOM

25–38 m²

King size bed

Bath with rain shower



DUPLEX SUITE

55 m² on two floors

King size bed

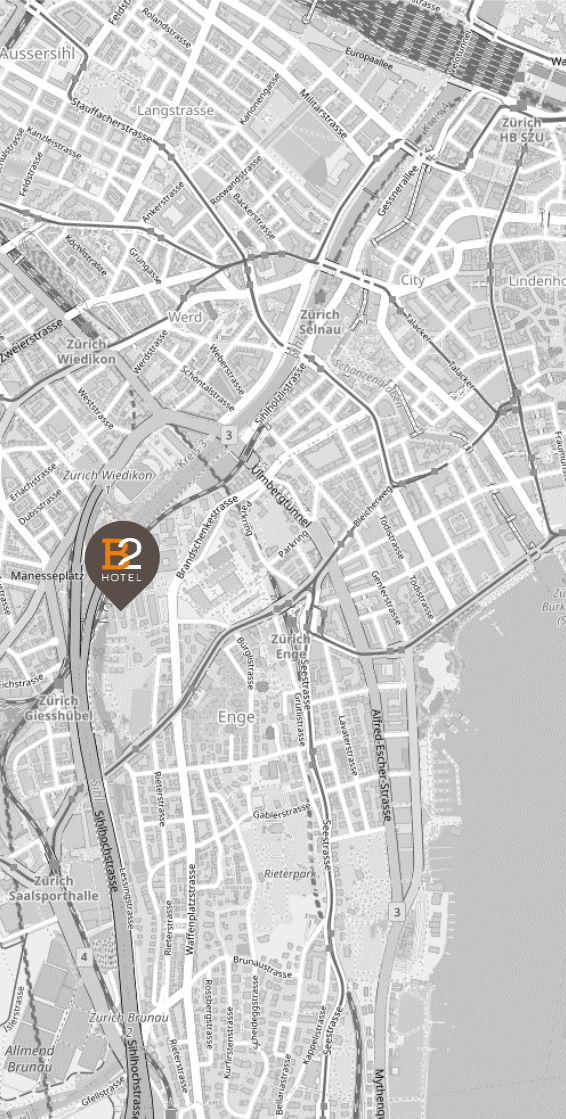
Free-standing bathtub

Dining area

Livingroom with sofa

Loggia

Bath with rain shower



ARRIVAL BY CAR

Please feel free to drive up to the main hotel entrance by car. For off-loading and loading your luggage, cars are allowed to stop in front of the hotel entrance area. You can park your car in the public parking garage on the Hürlimann-Areal. This is located immediately at the entrance to the Hürlimann-Areal on the right-hand side.

The day ticket costs CHF 25.00 per meeting day and CHF 35.00 per overnight stay.

Coming from Berne/Basel by the A1 motorway and from Lucerne/Airport/St. Gallen by the A4 motorway, follow signs for Chur (A3). After the Uetliberg tunnel follow signs for Zürich-City. Coming from Chur (A3) take exit 2 Brunau. Keep right on Allmendstrasse, continue along Giesshübelstrasse and then Bederstrasse. Follow the road for approx. 200 m and turn left at the traffic lights into Brandschenkestrasse, continue to Hürlimann-Areal (500 m on the left, red Hürlimann-Areal sign).

BY PUBLIC TRANSPORTATION

From Zurich Main Station S2, S8, S24 to Zürich Enge. Turn into Bederstrasse to the left side and follow the street (slightly up the hill) for approx. 200 meters, then turn right into Steinentischstrasse. After approx. 3 minutes you are just in front of the Hürlimann-Areal.

Or take S4 to Zürich Giesshübel (3 min drive), 5 min walk/elevator to the hotel.

B2 Hotel | Hürlimann-Areal
Brandschenkestrasse 152 | CH-8002 Zürich
 www.b2hotel.ch

bookmarkmeetings@b2hotel.ch | +41 44 567 67 67