

Meetings & Events



B HOTEL

THERMALBAD

Hürlimann Areal

INTRODUCTION



The B2 Hotel is where zeitgeist and history meet. The modern city hotel in the former Hürlimann Brewery impresses with a unique style, unmistakable architecture and an innovative concept that brings people together.

In the middle of Zurich.

Rooms	Boardrooms	Specials
60	2	Event location Machine Halle Library with 33'000 Books

All prices are in Swiss Francs and including of legal VAT.

BOARDROOMS



Some things are just better discussed in person.

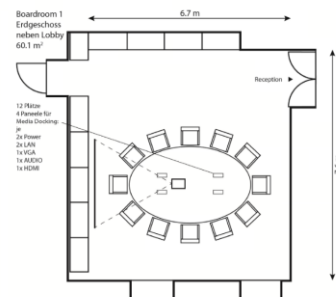
In real life or digitally. We're equipped for both.

Our two boardrooms are kitted out with modern presentation technology as well as state-of-the-art video conferencing equipment. We have the interior design to match your needs. Warm, bright and cosy.

Meetings in a small, refined setting and in the centre of the city.



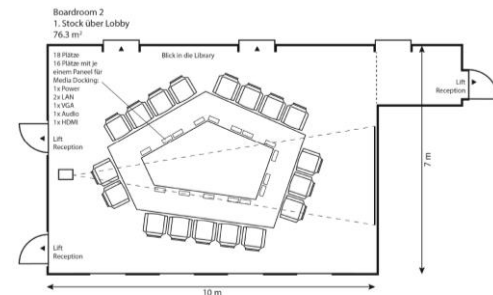
BOARDROOM BOOKMARK 1



Perfect for ...	brainstorming sessions & ground-breaking workshops
Max. capacity	14*
Size	60 m ²
Architecture	High ceilings, large windows, light wood panelling, a spacious round table, Eames office chairs.
Equipment	Projector/ projector screen/ 1 flip chart/ 1 pin board WLAN, Clickshare oder HDMI Nespresso machine for coffee und tea in the room throughout

* The conference packages can be booked for groups of 8 people and more.

BOARDROOM BOOKMARK 2



Perfect for ...	heated discussions, impactful presentations and anyone who ventures to look straight up
Max. capacity	20*
Size	76 m ²
Architecture	Grey concrete, red velvet curtains. Sculptural light fittings, avant-garde reflections from the pool above.
Equipment	Projector/ projector screen/ 1 flip chart/ 1 pin board WLAN, Clickshare oder HDMI Nespresso machine for coffee und tea in the room throughout

* The conference packages can be booked for groups of 8 people and more.

BOARDROOMS

CONFERENCE PACKAGES & ADD-ONS

CONFERENCE PACKAGE*

Room rental, coffee machine in the room at all times

Mineral water with / without, fruit étagère and B2 Brainfood

Projector, screen, 1 flipchart, 1 pin board, moderator's case

Halfday CHF 75.00 per person (available until 12h or starting from 13h) | Full day CHF 100.00

ADD-ONS (prices per person)

Minibar with a choice of soft drinks CHF 5.00

Welcome breakfast CHF 7.50

Croissant & Muesli

COFFEE BREAK

(MORNING AND/OR AFTERNOON)

Coffee, Tea, fresh juice

Sweet and savoury snack

We are happy to serve your coffee break in the room, coworking space or library

CHF 10.00 per Person

LUNCH

(served in the Wine Library or in the room)

2-Course Menu CHF 40.00

3-Course Menu CHF 50.00

Sandwich lunch incl. salad CHF 25.00

Price per person

DINNER

(from 18h)

3-Course Menu served in the Wine Library

CHF 79.00 per person

* Please note the minimum number of participants of 8 persons, for smaller groups the conference flat rate for 8 persons will be charged.

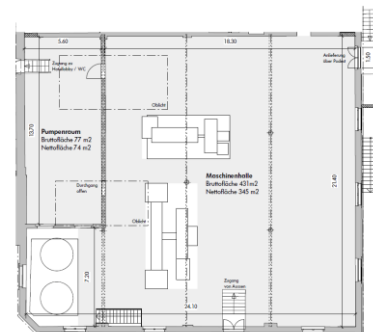


SMALL & PRIVATE DUPLEX SUITE

Perfect for ...	Cosy and confidential meetings
Max. Capacity	6
Size	55 m ²
Architecture	Suite on two floors , light wood panelling
Equipment	WLAN Nespresso machine for coffee und tea in the room throughout
Room Rental	Full day CHF 550.-



EVENTS MACHINE HALL



Perfect for ...	exhibitions, readings, aperitifs, product presentations, film and photo shoots
Size	170 m ² (theatre) 370 m ² (reception)
Architecture	Daylight through high windows and skylights separate entrance for guests direct delivery possible (door 1.40 m clear width)
Equipment	WLAN a max. of 8 high tables
Raummiete*	full day CHF 2000.- half day CHF 1500.- (the rent does not apply from a minimum consumption of CHF 5000.-)

EXTRAS

FLYING APÉROS

APÉRO* SUDHAUS

Marinated olives

Pakka nut mix

Cheese cubes

CHF 16.00 per person

APÉRO* KÜHLSCHIFF

Marinated olives

Pakka nut mix

B2 Plättli Deluxe (various cheeses and dried meat plate)

Fine bread from the St. Jakob bakery

CHF 32.00 per person

APÉRO* HÜRLIMANN

Marinated olives

Pakka nut mix

Carrot and ginger soup

Beetroot carpaccio with apple and horseradish

Brown trout fillet with lentil curry

Beef tagliata with mashed potatoes

Caramel cream

CHF 65.00 per person



EXTRAS

DINNER IN OUR LIBRARY

The tall windows hint at the industrial history of the room. Nowadays, the space is used for eating, drinking, talking, laughing, and reading – simply living. We source our products within a 250km radius. We're convinced of the quality.

For groups of up to 20 people we are happy to put together a 3-course dinner from our evening menu at CHF 79.00 per person.

Drinks are charged separately.

We will gladly send you our wine list.

MENU 

WINE LIST 

EXTRAS TECHNIC

STANDARDEQUIPMENT

Conference phone	CHF 150.00
Extra Flipchart	CHF 25.00
Extra Pinnchart	CHF 25.00
PA with microphone	CHF 200.00
Projector and screen	CHF 100.00

VIDEO & TELEPHONE CONFERENCE TOOL MEETING OWL

Bookmark 1 or 2
360° camera
360° microphone & speaker



CHF 150.00

VIDEO & TELEFONKONFERENZ TOOL LOGITECH RALLY

Only Bookmark 2
High definition camera including
microphones & speakers



CHF 250.00

SIDE PROGRAM IDEAS

GUIDED BREWMASTER TOUR IN THE B2

During an entertaining tour you will learn about the history of the former Hürlimann brewery.

Duration: ca. 45 minutes

Reservation: upon request and at least 7 days in advance

Incl. small Hürlimann-Bier Apéro

Flat rate: CHF 350.00

SPA

Hürlimannbad & Spa



CHOCOLATE COURSE

Löw Delights



Lindt – Home of Chocolate



COOKING WITH THE TEAM

Janes Fine Food



Koch Events GmbH



FONDUE WITH A VIEW

Uto Staffel



ESCAPE ROOM



Simultaneous game: Ideal for large groups, 6-24 players divided into 2-4 teams. Maximum number of participants per room: 6
only 10 minutes walk from the hotel

LASERTAG



Laser Arena

Group discounts from 20 people
only 5 minutes walk from the hotel

FOXTRAIL

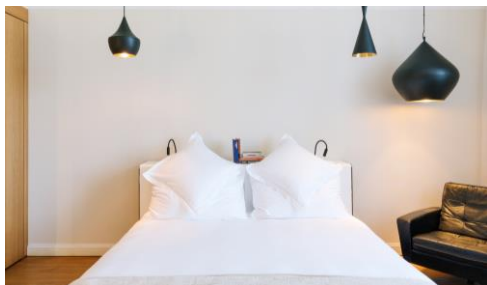


In search of clues through Zurich across the Hürlimann site

Duration: 1.5-2.5 hours

ROOMS

Where people used to work, today you sleep like on clouds. Sometimes with a loggia, always with design classics.

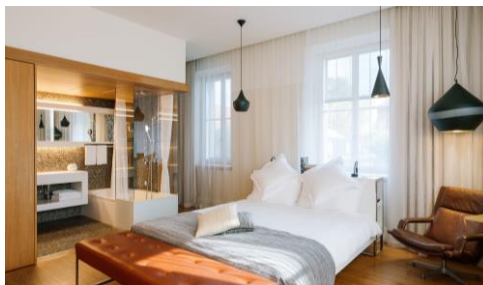


BOUTIQUE DOUBLE ROOM

24 – 28 m²

King Size Bed

Bath with rain shower



DELUXE DOUBLE ROOM

25 – 38 m²

King Size Bed

Bath with rain shower



DUPLEX SUITE

55 m² on two floors

King Size Bed

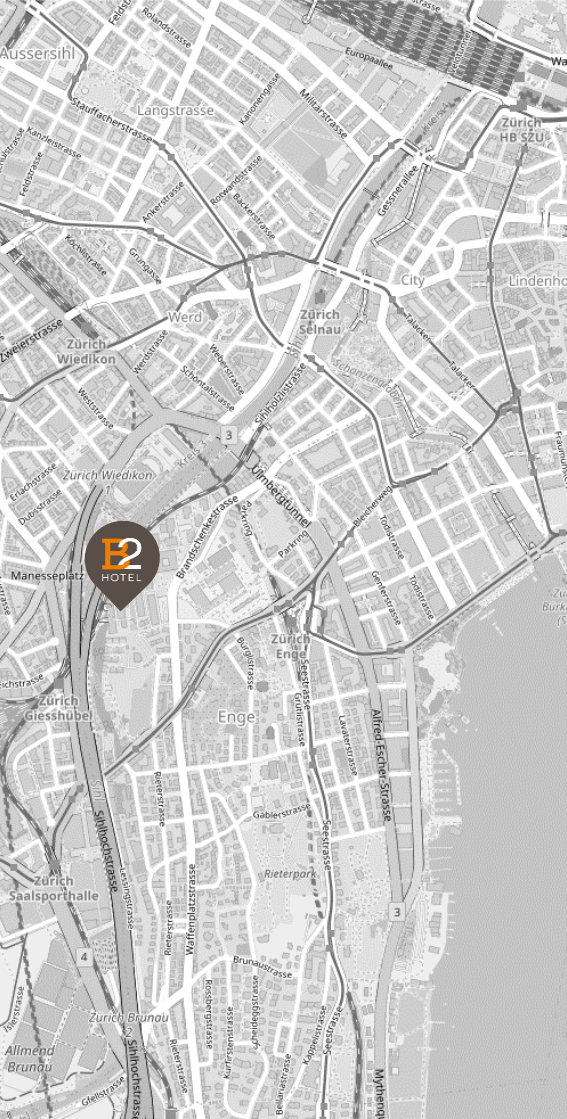
Free-standing bathtub

Dining area

Livingroom with sofa

Loggia

Bath with rain shower



ARRIVAL

BY CAR

You are welcome to drive up to the hotel driveway for loading and unloading.

Please note that for safety reasons it is not permitted to park in front of the hotel. You can park in the public car park on the Hürlimann site. This is located right at the entrance to the Hürlimann site on the right-hand side.

The day ticket costs CHF 25.00 per meeting day and CHF 35.00 per overnight stay.

From the motorways from Bern/Basel (A1) and from Lucerne/Airport/St.Gallen (A4), drive in the direction to Chur (A3). After the Uetliberg tunnel, head towards Zürich-City and from Chur (A3), take the exit to Brunau. Keep in the right lane onto Allmendstrasse, continue onto Giesshübelstrasse, continue onto Bederstrasse. Follow this road for about 200 metres and turn left at the traffic lights into Brandschenkestrasse as far as Hürlimann-Areal (500 metres on the left, red Hürlimann-Areal sign).

BY PUBLIC TRANSPORTATION

From Zürich HB S2, S8, S24 until Zürich Enge.

By foot over Steinentischstrasse (around 7 min).

Or S4 until Zürich Giesshübel (3 min. drive), 5 min. Footpath/Lift.

B2 Hotel | Hürlimann-Areal
Brandschenkestrasse 152 | CH-8002 Zürich
www.b2hotel.ch

bookmarkmeetings@b2hotel.ch | +41 44 567 67 67