



MEETINGS & EVENTS



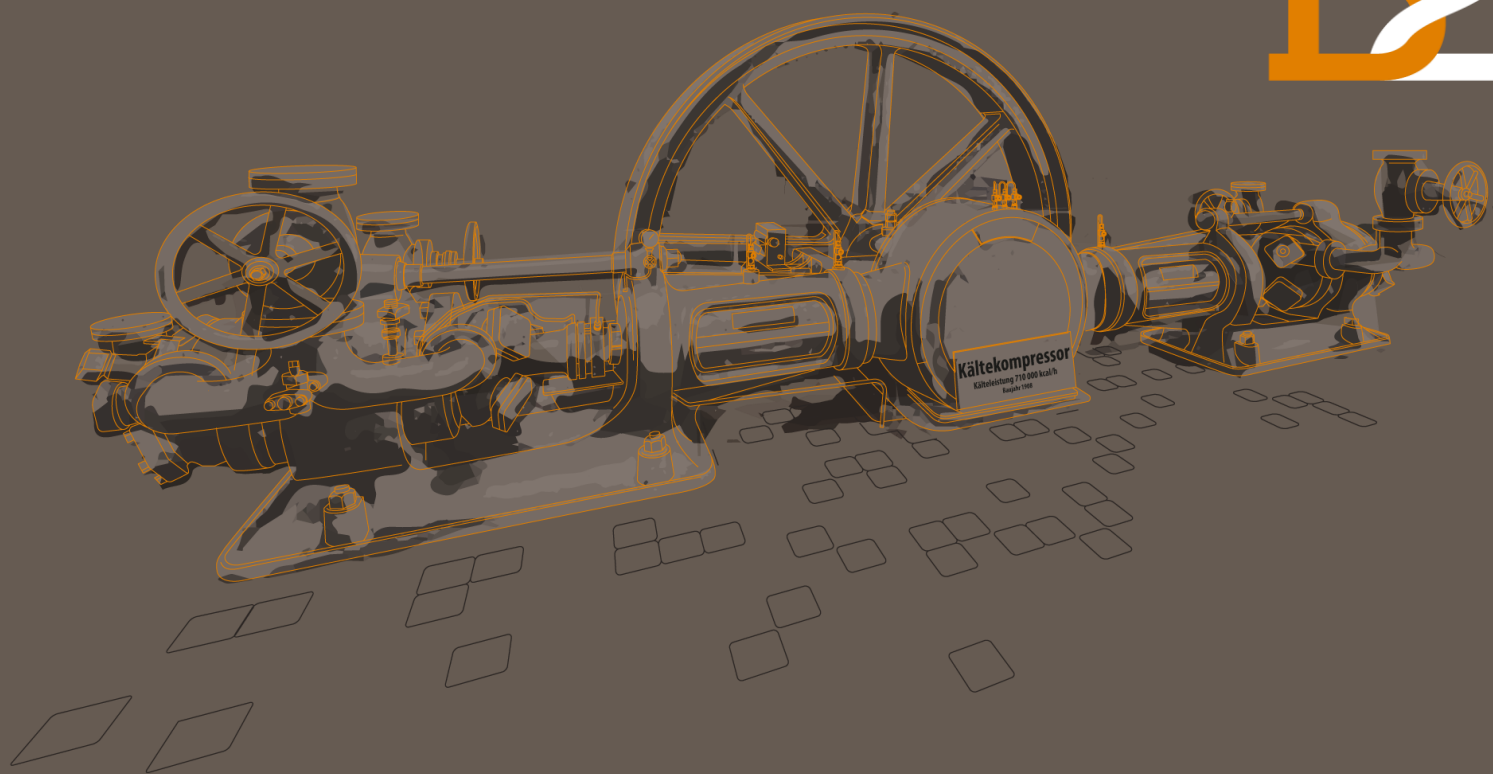
History. Lifestyle. Community.

The B2 Hotel is a 4-star boutique hotel with a strong link to both history and design. The modern city hotel in the former largest brewery of Switzerland impresses with its unique sense of style, unmistakable architecture, and an innovative concept that brings people together.

The hotel is located in the Zurich Enge area and offers 60 rooms, two boardrooms, a historic event location, and a restaurant. The so-called “Library” is famous for its 33,000 books and its healthy comfort food. In addition, the hotel offers private access to the public thermal bath with its famous infinity pool on the rooftop.



B2gether



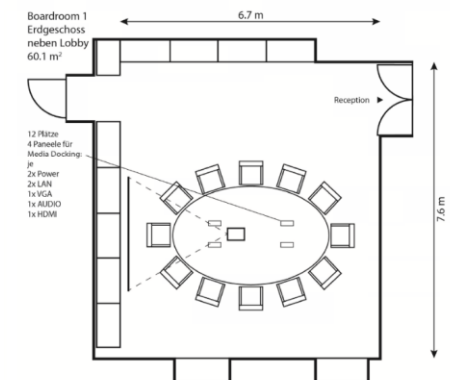
BOOKMARK 1



- Boardroom
- 60 sqm
- up to 14 pers.
- Full day: CHF 100 p.p.
- Half day: CHF 75 p.p

Interior:

- Large oval table
- Light-flooded room
- Projector and screen
- Flip chart, pin board and presentation kit
- „Clickshare“ or HDMI
- WiFi
- Nespresso machine and small minibar (with softdrinks)



The conference package can be booked for groups of 8 or more people.



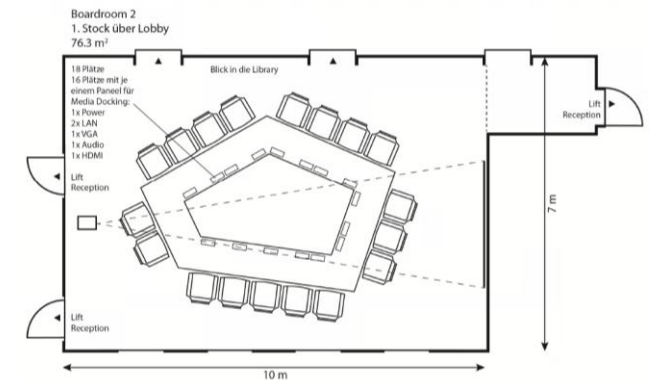
BOOKMARK 2



- Boardroom
- 76 sqm
- up to 18 pers.
- Full day: CHF 100 p.p
- Half day: CHF 75 p.p

Interior:

- Daylight from the windows above and the side
- Large pentagonal table
- Projector and screen
- Flip chart, pin board and presentation kit
- „Clickshare“ or HDMI
- WiFi
- Coffee machine and small minibar (with softdrinks)



The conference package can be booked for groups of 8 or more people.

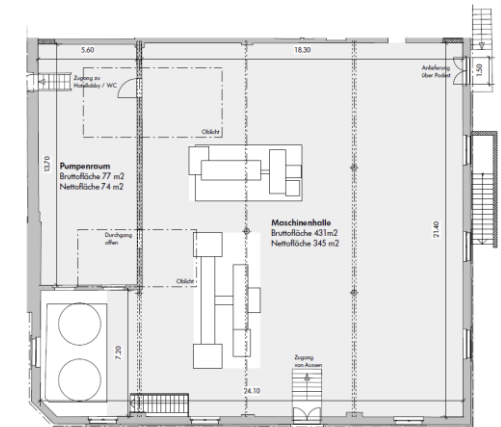


MACHINE HALL

- Event Location
- 370 sqm
- up to 150 pers.
- Flexible conference set-up or standing lunch/dinner
- Full day CHF 2'500.00
- Half day CHF 1'500.00

Interior:

- Light-flooded room
- Protected monument with historic charm*
- Customisable set-up
- WiFi



*Due to the many historic preservation regulations, there is no heating or cooling system.



COWORKING SPACE



- Open meeting space
- 35 sqm
- up to 20 pers.
- Price upon request

Interior:

- Open space
- Large wooden table
- WiFi

DUPLEX SUITE



- Private breakout room
- 55 sqm
- up to 6 pers.
- Daily flat rate: CHF 550.00

Interior:

- Daylight from the windows above and the side
- Balcony
- Two floors
- Variable set-up
- WiFi
- Nespresso machine and small minibar (with softdrinks)

TECHNICAL ADD-ONS

STANDARD EQUIPMENT

Additional flip chart CHF 25.00

Additional pin chart CHF 25.00

Projector and screen CHF 100.00



available at Bookmark 1 & 2

CONFERENCE TOOL «MEETING OWL»

360° camera (video)

360° microphone & speaker

CHF 100.00



available at Bookmark 1

CONFERENCE TOOL «LOGITECH RALLY»

High definition camera (video)

Microphones & speakers

CHF 100.00



available at Bookmark 2

SOCIAL PROGRAMS

GUIDED BREWMASTER TOUR

Fancy a guided tour through the walls of the former brewery with a brewmaster? Learn more about the history of the B2 Hotel with a beer tasting in the end.

Duration: ca. 45 minutes

Reservation: at least 7 days in advance

Price: CHF 400.00 (EN)



POWER YOGA SESSION

After a day in a (comfortable) chair, an energetic Power Yoga session might be the right thing to shake off all the digits. Move and flex together as a team with our master yogi.

Duration: ca. 1 hour

Reservation: at least 7 days in advance
(yoga mats will be provided)

Price: CHF 30.00 p.p.



CREATIVE TEAM BUILDING

Without being a Van Gogh or having a master's in fine art, everyone is welcome to have a creative, out-of-the-box team-building event. The staff from "Paint it Easy" guides through the unique experiences.

Duration: min. 1 hour

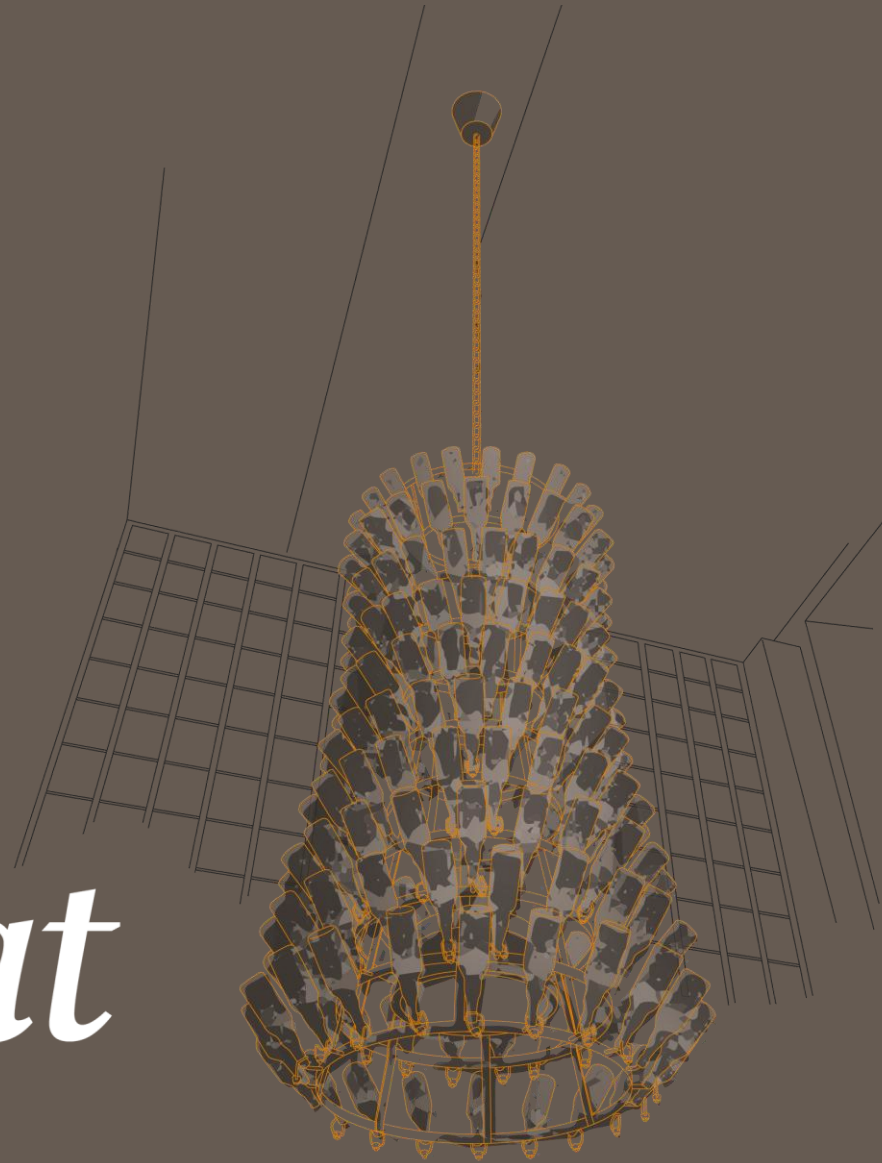
Reservation: at least 7 days in advance

Price: upon request



...and many more - from summer to winter, from to chocolate to wine, from nature to culture.

B2eat



MENU OPTIONS & ADD-ONS

CONFERENCE ROOM STARTER PACKAGE*

** the minimum number of participants are 8 people. Smaller groups are allowed but will be charged as 8*

Room rental (for Bookmark 1 & 2)

Water (still / sparkling), coffee machine, fruit basket and brainfood bites

Projector, screen, flip chart, pin chart and presentation kit

CHF 75.00 half day | CHF 100.00 full day

COFFEE BREAK

morning and/or afternoon

Served at the room/public areas:

Coffee, tea & fresh juice

Sweet and savoury snacks

CHF 10.00

LUNCH

starting from 11.30am

Served at the Library:

2-course menu CHF 50.00

3-course menu CHF 60.00

Served at the room:

Sandwich variations
with salad CHF 35.00

DINNER

starting from 06.00pm

Served at the Library:

3-course menu CHF 79.00

ADD-ONS

Served at the room/public areas:

Minibar with a selection
of softdrinks CHF 5.00

Welcome breakfast:
Birchermüesli &
croissant CHF 7.50

APERITIF

APÉRO SUDHAUS

Marinated olives

Nut mix

Cheese bites

CHF 16.00

APÉRO KÜHLSCHIFF

Marinated olives

3 different crostini

B2 Plättli deluxe
mixed platter with charcuterie and cheese

Homemade bread from a local
bakery

CHF 32.00

APÉRO HÜRLIMANN

Marinated olives

3 different crostini

B2 Plättli deluxe
mixed platter with charcuterie and cheese

Seasonal soup

Beef / vegetarian tartar

Polenta sticks with tomato pesto

Puff pastry filled with olives and
crème fraîche dip

Spicy meat balls

Seasonal panna cotta

CHF 65.00



LIBRARY



SEASONAL, HEALTHY COMFORT FOOD

→ [CURRENT MENU](#)

→ [BEVERAGE & WINE LIST](#)



TERRACE LAB

B2sleep



BOUTIQUE DOUBLE ROOM

24 - 28 sqm
from CHF 370.00



DELUXE DOUBLE ROOM

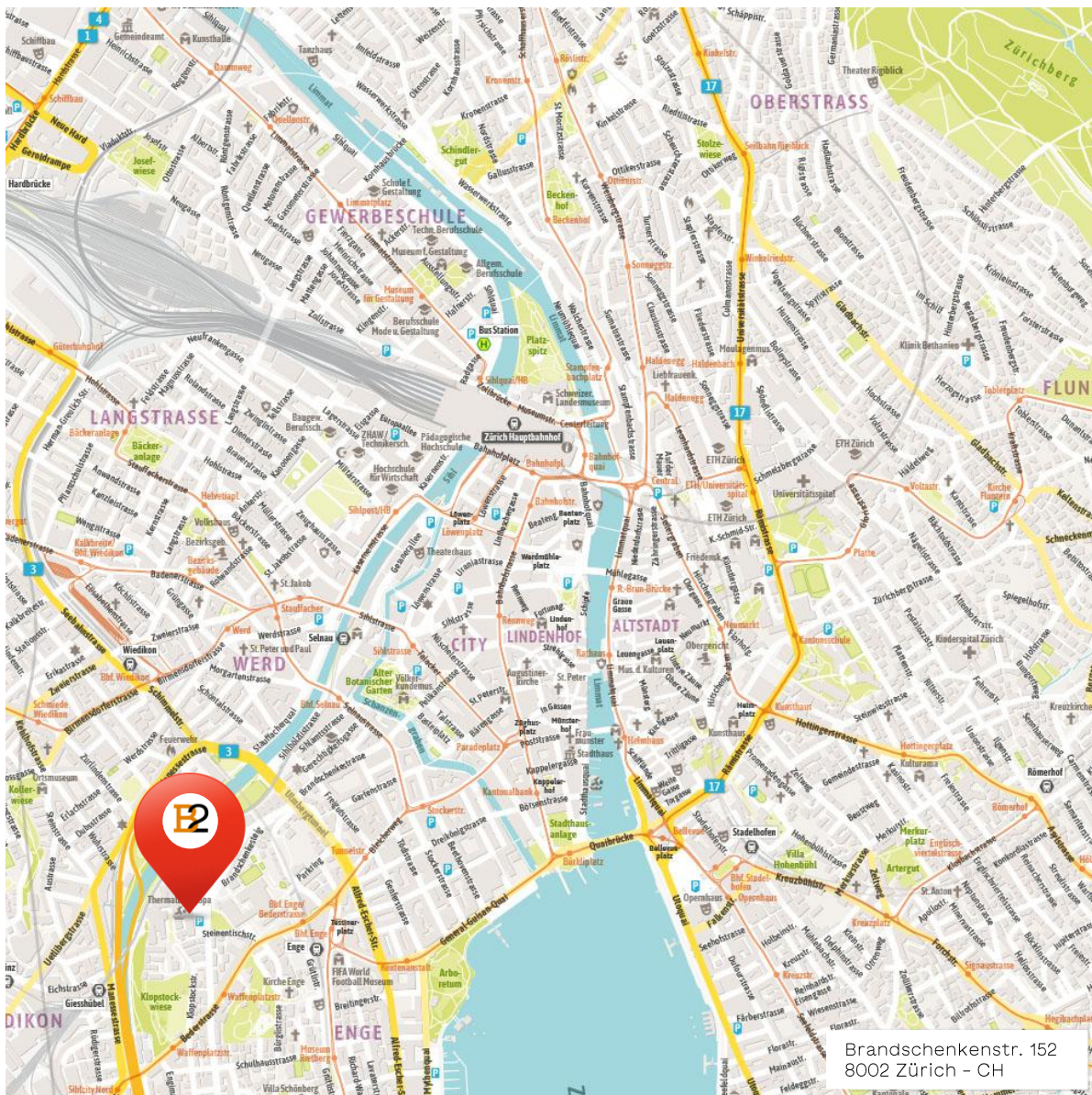
25 - 38 sqm
from CHF 430.00



DUPLEX SUITE

55 sqm
from CHF 530.00





ARRIVAL BY PUBLIC TRANSPORT

“Zurich Giesshübel” train stop
→ 3min by train from Zurich main station, 4min on foot (300m).

“Zurich Enge” train stop
→ 6min from Zurich main station, 10min on foot (600m).

ARRIVAL BY CAR

- Exit the motorway at Zurich Brunau: This exit is approximately 2min from the hotel.
- Follow the signs to Zurich-City: After exiting, stay in the right lane and continue on Allmendstrasse, then onto Giesshübelstrasse, and finally Bederstrasse.
- Turn left onto Brandschenkestrasse: After about 200m, turn left at the traffic light onto Brandschenkestrasse.
- Arrive at the Hürlimann-Areal: Continue for approximately 500m; the B2 Hotel is located on the left side at Brandschenkestrasse 152.

PARKING FACILITIES

During daytime, there are limited parking spaces in front of the hotel. For overnight guests, the hotel offers a valet parking service for CHF 35 per night (CHF 52 for e-cars).



B2 HOTEL

Hürlimann Areal
Brandschenkestrasse 152
8002 Zürich - CH

+41 44 567 67 67
bookmarkmeetings@b2hotel.ch

